

**Color Charts and Effect Prints**

Currently the following listed prints are available. These are a useful work and acquisition instrument for the daily work, the investigation of suitable color formulations as well as demo samples for specific discussions and advertising conversations.

All Color Charts and Effect Prints are created by screen printing technology and contain a detailed description inclusive technical data. For the documentation of the opacity resp. transparency of the shown shade all colors have been applied on white, black and transparent substrate.

The descriptions on the prints are kept in german and english language. Depending on the article a protection fee will be charged.

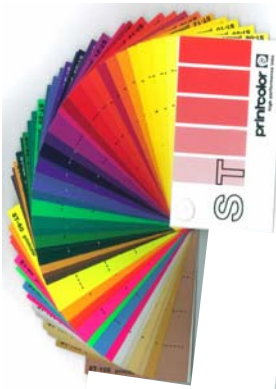
**Article-Number      Description**

**Series 10-01**

**Color Guide ST**

Screen printed documentation of 29 colors, mixed of the MS Base System with addition of 9 fluorescence and 9 metallic colors.

Print on paper, white, glossy.



**Series 10-02**

**Color Guide MS**

Screen printed color reference system with over 400 colors, mixed with the MS Base Colors. The documentation is completed by the color formulas.

Print on PVC self-adhesive foil, white, glossy.



**Series 10-08**

**Color Guide MS-800**

Screen printed color references of the high lightfast pigmented MS system for tarpaulins; for roll- and spray application on PVC fabric materials.

For the simulation of the in practice resulting high ink layer these MS Base Colors have been applied with a 43-80 W PW PET 1000 mesh.

Print on PVC fabric material, white, glossy.





### Series 10-26

### Color Chart easyMIX

Screen printed documentation of the 12 base colors of the easyMIX Color Mix System.  
 Print on rigid PVC, white, glossy.



### Series 10-37/HL

### Color Chart MS High Lightfastness

Screen printed documentation of the 18 MS Base Colors with maximized lightfastness.  
 Print on rigid PVC, transparent, glossy.  
 For the evaluation of the opacity resp. chroma partially placed black resp. white underneath.



### Series 10-37/HP

### Color Chart MS High Pigmented

Screen printed documentation of the 14 MS Base Colors with maximized opacity resp. maximum pigment ratio.  
 Print on rigid PVC, transparent, glossy.  
 For the evaluation of the opacity resp. chroma partially placed black resp. white underneath.



### Series 10-37/HR

### Color Chart MS High Thermoresistant

Screen printed documentation of the 12 MS Base Colors with maximized thermoresistance.  
 Print on rigid PVC, transparent, glossy.  
 For the evaluation of the opacity resp. chroma partially placed black resp. white underneath.



## Series 10-37/HT

## Color Chart MS High Transparent

Screen printed documentation of the 15 MS Base Colors with extreme transparency and very high color deepness.

Print on rigid PVC, transparent, glossy.

For the evaluation of the opacity resp. chroma partially placed black resp. white underneath.



## Series 10-39/SS300

## Effect Print Olfactory, Strawberry

Screen printed visualization of the olfactory ink „Strawberry“, which is equipped with encapsulated smelling essence.

Print on rigid PVC, transparent, glossy.

Back printed white with a high resolution halftone, 1000 dpi by screen printing technology.



## Series 10-39/SS301

## Effect Print Olfactory, Orange

Screen printed visualization of the olfactory ink „Orange“, which is equipped with encapsulated smelling essence.

Print on rigid PVC, transparent, glossy.

Back printed white with a high resolution halftone, 1000 dpi by screen printing technology.



## Series 10-39/SS303

## Effect Print Olfactory, Red Rose

Screen printed visualization of the olfactory ink „Red Rose“, which is equipped with encapsulated smelling essence.

Print on rigid PVC, transparent, glossy.

Back printed white with a high resolution halftone, 1000 dpi by screen printing technology.



### Series 10-39/SS305 Effect Print Olfactory, Leather

Screen printed visualization of the olfactory ink „Leather“, which is equipped with encapsulated smelling essence.

Print on rigid PVC, transparent, glossy.

Back printed white with a high resolution halftone, 1000 dpi by screen printing technology.



### Series 10-39/SS306 Effect Print Olfactory, Ginger Bread

Screen printed visualization of the olfactory ink „Ginger Bread“, which is equipped with encapsulated smelling essence.

Print on rigid PVC, transparent, glossy.

Back printed white with a high resolution halftone, 1000 dpi by screen printing technology.



### Series 10-39/SS310 Effect Print Olfactory, Wood

Screen printed visualization of the olfactory ink „Wood“, which is equipped with encapsulated smelling essence.

Print on rigid PVC, transparent, glossy.

Back printed white with a high resolution halftone, 1000 dpi by screen printing technology.



### Series 10-39/SS311 Effect Print Olfactory, Peppermint

Screen printed visualization of the olfactory ink „Peppermint“, which is equipped with encapsulated smelling essence.

Print on rigid PVC, transparent, glossy.

Back printed white with a high resolution halftone, 1000 dpi by screen printing technology.



## Series 10-39/SS312 Effect Print Olfactory, Coconut

Screen printed visualization of the olfactory ink „Coconut“, which is equipped with encapsulated smelling essence.

Print on rigid PVC, transparent, glossy.

Back printed white with a high resolution halftone, 1000 dpi by screen printing technology.



## Series 10-40 Color Chart ST Fluorescence

Screen printed color reference of the 9 ST fluorescence colors.

Print on rigid PVC, transparent, glossy.

For the evaluation of the opacity resp. chroma partially placed black resp. white underneath.



## Series 10-41 Color Chart ST Silver

Screen printed color reference of the 5 Standard Silver types.

These illustrate the base range of Silver shades and are at the same time the base for mixing metallic colors.

Print on rigid PVC, transparent, glossy.

For the evaluation of the opacity resp. chroma partially placed black resp. white underneath.



## Series 10-42/1 Color Chart ST Gold I

Screen printed color reference of the 5 ST colored metallic Gold.

Print on rigid PVC, transparent, glossy.

For the evaluation of the opacity resp. chroma partially placed black resp. white underneath.





### Series 10-42/2

### Color Chart ST Gold II

Screen printed color reference of the 4 Standard Gold types. These illustrate the base range of Gold shades in the area *Rich Pale Gold* and are at the same time the base for mixing metallic colors. Print on rigid PVC, transparent, glossy. For the evaluation of the opacity resp. chroma partially placed black resp. white underneath.



### Series 10-43

### Effect Print Phosphorescence PEQ

Screen printed visualization of the phosphorescence inks in *Economy Quality* for decorative and functional applications in the acquisition area. Print on rigid PVC, transparent, glossy. Back printed with polychromatic glitter by screen printing technology.



### Series 10-44

### Effect Print Phosphorescence PHQ

Screen printed visualization of the phosphorescence inks in *Security Quality* for maximum afterglow time and use for signalling escape routes. Print on rigid PVC, transparent, glossy. Back printed with officially required RAL colors for signalling applications by screen printing technology.



### Series 10-44/ECO

### Effect Print Phosphorescence PHQ/ECO

Screen printed visualization of the phosphorescence inks in *Security Quality* for high afterglow time and use for signalling escape routes but also for decorative applications in the promotion area. Print on rigid PVC, transparent, glossy. Back printed by screen printing technology.